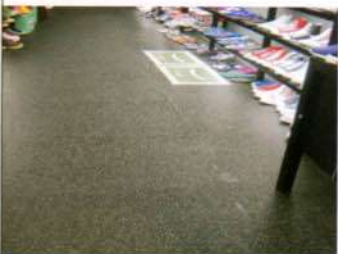


星彩地板

Rubber Flooring MeiguStar



技术资料 Technical Details

星彩卷材 MeiguStar Rolls

星彩卷材宽度: 标准宽度1,220mm,可订制 \leq 1,500mm

Roll-width: Standard width 1,220 mm, Customized width \leq 1,500mm

星彩卷材长度: 10m, 20m, 30m, 或客户自定长度

Roll length from: 10m, 20m, 30m, also Customized length

星彩卷材厚度: 3 - 12 mm

Thickness: 3 - 12 mm

星彩扣式地板 MeiguStar Interlock

星彩扣式地板尺寸: 500 x 500 mm, 1000 x 1000 mm, 或客户自定尺寸

Outer dimensions: 500 x 500 mm, 1000 x 1000 mm, also Customized size

星彩扣式地板厚度: Thickness: 6 - 12 mm

Thickness: 6 - 12 mm

应用范围 Applications

健身俱乐部, 重量训练, 医院地板, 娱乐场所, 溜冰场, 滑雪场, 销售大厅, 各种展览会, 零售店铺...

Fitness Clubs, Weight Training, Physiotherapy, Recreation, Wellness, Ice Arenas, Ski Rental, Cable Cars, Trade Fairs, Exhibitions, Sales Areas, Retail, Customer Services...

产品描述 Product Details

美国坦星彩地板的基本设计, 是由最主要的黑色, 搭配一种或两种颜色。作为经典的星彩地板。

MeiguStar consists of one design that combines two or three colours. The primary colour is black. MeiguStar is supplied in several different colour combinations.

■ 星彩地板

Rubber Flooring MeiguStar

■ 多彩地板

Commercial Rubber Flooring MeiguMultStar

■ EPDM预制型球场

Multi-Use Game and Sport Surface MeiguFlex

■ 隔音减震地垫

Impact, Sound Insulation MeiguAcoustic.

■ 复合减震地板

Colorful Covering and Impact, Sound Insulation MeiguOffice.

■ 环保人行步道

Rubber Sidewalks MeiguWalk.

■ 橡胶软木系列 - 隔音减震地垫

Acoustical Underlay MeiguAcoustic.Rubber and Cork Series.

■ 曲棍球、足球底垫

Soft Pads for Sand/Rubber-Filled Artificial Turf

■ 运输防滑垫

Meigutan Anti-Slip Mat

■ 洒颗粒跑道

Athletic Track Meigutan EG

■ 透气型跑道

Athletic Track Meigutan ES

■ 丙烯酸地垫型球场

Sport Grounds Meigutan EA

■ 弹性橡胶安全地垫

EPDM Safety Tile

■ 高尔夫打击垫

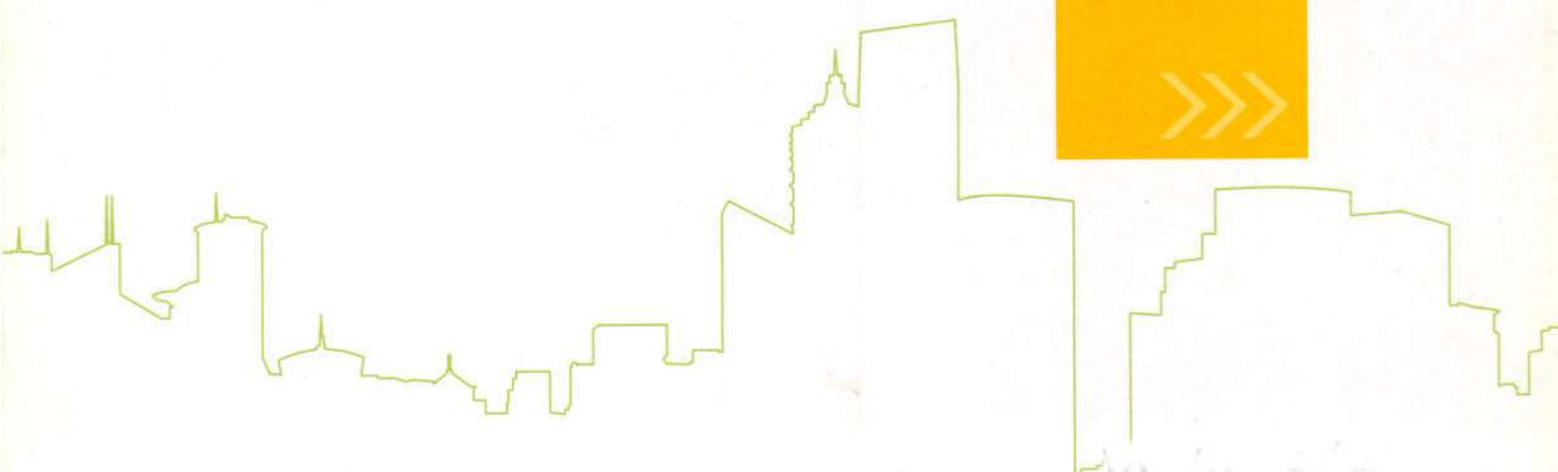
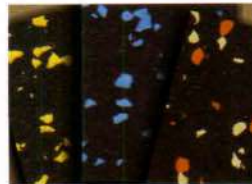
Shock-Resistant Driving Mat

■ 休闲草垫

Artificial Turf Safety Mat

■ 胶水和粘结剂

In-Situ Binders and Adhesive



多彩地板

Commercial Rubber Flooring Meigu MultStar

技术资料 Technical Details

多彩卷材宽度 Meigu MultStar Rolls

标准宽度: 1,220mm, 可订制 $\leq 1,500$ mm

Roll-width: Standard width 1,220 mm, Customized width $\leq 1,500$ mm

多彩卷材长度: 10m, 20m, 30m, 或客户自定长度

Roll length from: 10m, 20m, 30 m, also Customized length

多彩卷材厚度: 3 - 12 mm

Thickness: 3 - 12 mm

多彩扣式地板 Meigu MultStar Interlock

多彩扣式地板尺寸: 500 x 500 mm, 1000 x 1000 mm, 或客户自定尺寸

Outer dimensions: 500 x 500 mm, 1000 x 1000 mm, also Customized size

多彩扣式地板厚度: 6 - 12 mm

Thickness: 6 - 12 mm



应用范围 Applications

办公室, 医疗设施, 教育设施, 零售门店, 机构设施, 大厅入口, 体育场, 礼堂, 音乐厅, 电影院, 洗手间, 游泳池周围, 健身俱乐部, 更衣室, 候车厅, 高尔夫球设施, 人行道, 展览会等。

Offices, Health care Facilities, Educational Facilities, Retail, Institutional Facilities, Building Entrances, Stadia, Auditoria, Concert Halls, Cinemas, Washrooms, Pool Surrounds, Fitness Gyms, Changing Rooms, Waiting Rooms, Golf Facilities, Walkways, Exhibitions, etc.

产品描述 Product Details

美固坦-多彩地板是所有设计师的设计梦想, 美固坦-多彩地板是一种高密度的卷材或是片材, 地板多样的水磨石花色, 同时具有隔音、柔韧及耐用的特性。美固坦-多彩地板是由多种EPDM色彩混合而成的新型地板。因此美固坦-多彩地板是适合所有室内、室外的装修设计。

A designer's dream - Meigutan Meigu MultStar is a high-density sheet floor that is evocative of terrazzo style flooring, while also being sound insulating, flexible and durable. Meigutan Meigu MultStar is made entirely of Mixed Colored EPDM Rubber, and is thus suitable for all interior applications.



EPDM预制型球场

Multi-Use Game and Sport Surface MeiguFlex

应用范围 Applications

学校室内球场、学校室外操场、球场（网球、篮球、排球、手球、羽毛球...）

School and outdoor and indoor sport grounds (tennis, basket-ball, volley-ball, hand-ball, badminton...)

产品描述 Product Details

Meigutan MeiguFlex 是的多功能的运动训练场地，使学校的体育、运动更富有乐趣。预制的双层环保卷材可轻松的在沥青或混凝土基础上施工。弹性的卷材有效的降低冲击力量。也使Meigutan MeiguFlex 拥有高性能的球反弹特性。

Meigutan MeiguFlex is the multifunction sports covering for training, school sports, trend sports and fun courts. The prefabricated dual-layered rolls are quickly and easily laid on Asphalt, Concrete and other bound sub-bases. It's force reduction is somewhat less than that stated in the standard. This makes Meigutan MeiguFlex popular for fast ball games with the highest possible ball rebound properties.

预制的Meigutan MeiguFlex，层具有相同的厚度，因此提供均匀的弹性，其面层可以根据客户需求，生产不同颜色的表面。而底层可以选用较经济材料，使产品具有，经济，美观，且耐用的特性。

Prefabricated Meigutan MeiguFlex has the same thickness all over and therefore offers homogeneous elasticity. The individual rolls can be produced and combined in different colours, creating low-cost contrasting colours for players with impaired vision.

基础 Subbase

沥青基础或混凝土基础 Asphalt or Concrete

厚度 Thickness

标准厚度：4mm面层，4mm弹性层，其他厚度可订做

Standard offer: Top layer 4 mm, elastic layer 4 mm; other thicknesses upon request

耐候性 Resistance to weather

优越的抗紫外线性能，即使在极热或冷的地方皆有优良的性能。

UV-resistant, durable even in extreme heat, cold and moisture

渗透性 无

Water permeability No



隔音减震地垫

Impact, Sound Insulation MeiguAcoustic

Especially for Ceramic tile and Wooden flooring

卷材尺寸: 宽: 1220mm, 长度10M 或15M, 客户可订制长度

片材尺寸: 1000mm x 1200mm, 客户可订制尺寸

Rolls Size: 1220mm x 10000mm, 1220mm x 15000mm, also Customized length

Sheet Size: 1000mm x 1200mm

厚度: 3mm ~ 12mm

Thickness: 3mm ~ 12mm, also Customized

材料: PUR橡胶, 及SBR橡胶

Material: PUR-bound special rubber granules

重量: 700公斤/立方米 ~ 900公斤/立方米

Weight: 700 kg / m³ ~ 900 kg / m³, also Customized

拉伸强度: 大约0.6牛顿/mm²

Tensile strength: Approx. 0,6 N / mm²

断裂强度: 大约55%

Elongation at break: Approx. 55%

防火分类: B2

Fire classification (DIN 4102): B2

隔音效能: 3mm约降低 18 dB, 5mm约降低 20 dB

Impact Sound Insulation:

For 3 mm approx. 18 dB, for 5 mm approx. 20 dB when used with 2 mm PVC flooring. (with appropriate thicknesses and selected floor coverings up to 34 dB can be achieved).



MAGICTAN®

复合减震地板

Colorful Covering and Impact, Sound Insulation MeiguOffice



片材尺寸: 980mm x 980mm, 490mm x 490mm
Sheet Size: 980mm x 980mm, 490mm x 490mm

厚度: 5mm, 7mm 9mm
Thickness: 5mm, 7mm 9mm, also Customized



重量: 700公斤/立方米 ~ 900公斤/立方米
Weight: 700 kg / m³ ~ 900 kg / m³, also Customized

拉伸强度: 大约0.6牛顿/mm²
Tensile strength: Approx. 0,6 N / mm²

断裂强度: 大约55%
Elongation at break: Approx. 55%



防火分类: B2
Fire classification (DIN 4102): B2

隔音效能: 3mm约降低 18 dB, 5mm约降低 20 dB
Impact Sound Insulation: For 3 mm approx. 18 dB, for 5 mm approx. 20 dB when used with 2 mm PVC flooring. (with appropriate thickness and selected floor coverings up to 34 dB can be achieved).



环保人行步道

Rubber Sidewalks MeiguWalk

应用范围 Applications

住宅小区人行道、市政人行道、公交车候车亭、高尔夫球车路径、公园步道等。
Municipal Sidewalks, Residential Sidewalks, Patio Blocks, Golf Cart Paths.

产品描述 Product Details

美固坦 - 环保人行步道 是环保的新型材料, 优良的耐用性可承受自行车、行人的频繁使用。表现优良的抗滑性能, 可在下雪、下雨的时候, 保护行人的安全。
Rubber sidewalks Meigutan MeiguWalk. are both permanent and portable, and offer the durability required to withstand bicycles, sidewalk plows, and accommodate wheel chair, walker, constant pedestrian traffic, equestrian, and vehicular traffic.

产品优点 Advantages

- ◆ Flexible and will not crack or separate from frost heave like concrete.
- ◆ Modular slabs can be lifted and re-set as required
- ◆ Provides instant access once installed
- ◆ All season, all weather durability including snow plowing and de-icing
- ◆ Safe, anti-slip surface can reduce liability claims
- ◆ Allows for instant access to underground utilities without losing investment
- ◆ Attractive colour options and pattern without the steep price of stamped concrete

安全、防滑的表面, 可以有效避免索赔责任。

优秀的拉伸性能, 不会发生断裂及良好的抗冻性能, 不会发生冻胀。

绿色环保材料, 使政府采购, 更趋于绿色环保。

尺寸: 700mm x 400mm, 400mm x 400mm

Size: 700mm x 400mm, 400mm x 400mm

厚度: 4mm, 6mm, 8mm, 10mm, 12mm, 或根据客户要求

Thickness: 4mm, 6mm, 8mm, 10mm, 12mm, also Customized



MAGICTAN®

橡胶软木系列 - 隔音减震地垫

Acoustical Underlay Meigu Acoustic.Rubber and Cork Series

Our line features sound tested underlayments for commercial residential installations in condominiums and large scale commercial flooring projects. Sound rated rubber and cork underlayments features sound testing results that meet all national building codes for sound dampening and sound reduction flooring underlayments for all building material types.

Rolls Size : 1220mm x 10000mm, 1220mm x 15000mm, also Customized length

Sheet Size: 1200mm x 1000mm

卷材尺寸: 宽1220mm, 长度10M 或15M, 客户可订制长度

片材尺寸: 1200mm x 1000mm, 客户可订制尺寸

Thickness: 3mm ~ 12mm, also Customized

厚度: 3mm ~ 12mm

Material: PUR-bound special rubber granules

材料: PUR橡胶, 及SBR橡胶

Weight: 700 kg / m³ ~ 900 kg / m³, also Customized

重量: 700公斤/立方米 ~ 900公斤/立方米

Tensile strength: 0,38 Mpa

拉伸强度: 0,38 Mpa 牛顿/mm²

Elongation at break: 48%

断裂强度: 48%

Fire classification (DIN 4102): B2

防火分类: B2

Impact Sound Insulation:

隔音效能: 3mm约降低 18 dB, 5mm约降低 20 dB

For 3 mm approx. 18 dB, for 5 mm approx. 20 dB (with appropriate thickness and selected floor coverings up to 34 dB can be achieved).



曲棍球、足球底垫

Soft Pads For Sand/Rubber-Filled Artificial Turf

应用范围 Applications

作为人造草场地（足球场、曲棍球场）的底垫，Meigutan Soft Pads可通过体育场地国家标准要求。
As underlay for artificial turf systems with sand and rubber infill compositions, Meigutan Soft Pads can passed according to sports requirements.

产品描述 Product Details

Meigutan Soft Pads是工厂预制的卷材，Meigutan Soft Pads有良好的性能表现，其力量衰减的性能，可根据项目的要求订制，并符合特殊的场地要求。Meigutan Soft Pads是人造草场地的完美解决方案，可有效的发挥球的反弹性能，并有缓冲性能的具体特点。

Meigutan Soft Pads are supplied in prefabricated rolls. Meigutan Soft Pads has high performance that force reduction values can be individually modified to meet project-specific requirements. Meigutan Soft Pads is the perfect solution wherever there are specific characteristics on ball rebound, force reduction and other cushioning properties required.

基础 Subbase

沥青基础或混凝土基础 Asphalt or Concrete

厚度8-14 mm, 决定于人造草的规格

Thickness 8-14 mm, depending on turf system



MAGICTAN®

运输防滑垫 Meigutan Anti-Slip Mat

应用范围 Applications

可放置在木制托盘底下防止货物滑动，运输时放置在预制钢筋混凝土构件底部做为保护，各种规格的管材，钢材，钢卷及其他大件产品。

Under precast concrete parts, loose pipes, pipe packages, steel girders, reinforcing steel mesh and other general cargo that cannot be palletised

产品描述 Product Details

美国坦运输防滑垫，具有物超所值的效用，很适合大多数的产品运输，提供防滑的保护。

美国坦运输防滑垫已经证明了其产品的效果，已被许多船务公司，运输公司所使用。

Meigutan anti-slip mat. Offering good value for money, it is suitable for most average transports. Meigutan has proven its worth for many years and is used as the standard friction-increasing surface by many transportation companies and shipping agents today.

密度: 720 kg/m³, 750 kg/m³, 920 kg/m³ and 1.015 kg/m³

Density: Approx. 720 kg/m³, 750 kg/m³, 920 kg/m³ and 1.015 kg/m³

拉伸强度: 0.80N/mm² DIN 53571, 方法测试B

Tensile strength: 0.80 N/mm² DIN 53571, test method B

断裂强度: 60%.DIN 53571, 方法测试B

Elongation at break: 60%.DIN 53571, test method B

使用温度: -40°C to 115 °C

Temperature resistance: -40°C to 115 °C

防火性能: B2,DIN 4102

Reaction to fire: B2,DIN 4102

交货形式: 卷材、片材、其他订制尺寸

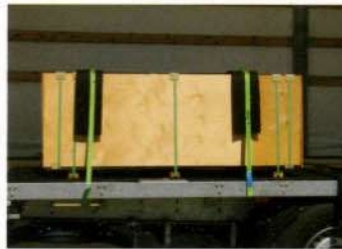
Delivery form: rolls, sheets, cuttings on request

厚度: 3 - 15 mm

Thickness: 3 - 15 mm

尺寸 (mm) 数量

Dimensions in mm	Quantity / pallet
5.000 x 250 x 8	60
5.000 x 125 x 8	133
5.000 x 250 x 4	144
200 x 100 x 8	5.000
13.600 x 150 x 3	120
20.000 x 150 x 3	88
800 x 150 x 3	2.400
600 x 150 x 3	3.500



洒颗粒跑道

Athletic Track Meigutan EG

应用范围 Applications

学校跑道，一般的运动区，国家田径场。

School and popular sports, national competitions, stadium.

产品描述 Product Details

Meigutan EG 跑道是由专业的美固坦公司生产。预制的弹性垫被放置在基础上，与沥青基础或混凝土基础粘合。特殊的材料组成，保证受力均匀减少。Meigutan EG 跑道是一种高品质的人工合成田径面层。

The base mat of Meigutan EG Athletic Track is a speciality of MGT. The prefabricated material is placed on site and bonded to the subbase (Asphalt or Concrete layer). The special composition of materials guarantees a uniform force reduction. Meigutan EG Athletic Track is thus a synthetic track and field surface of high quality.

基础 Subbase

沥青基础或混凝土基础 Asphalt or Concrete

厚度 Thickness

标准厚度: 3mm面层, 10mm弹性层, 其他厚度可订做

Standard offer: wear layer 3mm, elastic layer 10mm; other thicknesses upon request

耐候性 Resistance to weather

优越的抗紫外线性能，即使在极热或冷的地方皆有优良的性能。

UV-resistant, durable even in extreme heat, cold and moisture.

渗透性 无

Water permeability No



透气型跑道

Athletic Track Meigutan ES

应用范围 Applications

学校跑道，一般的运动区，国家田径场。

School and popular sports, national competitions, stadium.

产品描述 Product Details

Meigutan EG 跑道是由专业的美固坦公司生产。预制的弹性垫被放置在基础上，与沥青基础或混凝土基础黏合。由于生产过程的重视，均匀的厚度及密度，使得材料可保证受力均匀减少。简单且快速的喷涂施工。

Meigutan EG 透气型跑道是一个具有节约成本的工艺。适合所有的体育设施。

The base mat of Meigutan ES is a prefabricated material which is placed on site and bonded to the subbase (Asphalt or Concrete layer). As the production process is supervised an uniform thickness and density of the coating can be ensured. This results in an entire reliable force reduction.

The spray coating is very simple to install. Meigutan ES is therefore a cost effective solution for all sports facilities.

基础 Subbase

沥青基础或混凝土基础 Asphalt or Concrete

厚度 Thickness

标准厚度：2mm面层，11mm弹性层

Standard offer, Wearing surface: PUR spray coating 2mm, elastic layer 11 mm

耐候性 Resistance to weather

优越的抗紫外线性能，即使在极热或冷的地方皆有优良的性能。

UV resistant, even withstands heat, coldness and moisture.

渗透性 有

Water permeability Yes



丙烯酸地垫型球场 Sport Grounds Meigutan EA



应用范围 Applications

学校室内球场、学校室外操场、球场（网球、篮球、排球、手球、羽毛球..）

School and outdoor and indoor sport grounds (tennis, basket-ball, volley-ball, hand-ball, badminton...)

产品描述 Product Details

我们的Meigutan EA系统提供高品质的丙烯酸面层，施工容易且非常适合室内、户外运动（多功能球场：网球、篮球、排球、手球、羽毛球..）

Our range Meigutan EA offers high quality acrylic coatings easy to apply and especially designed for the realization of outdoor and indoor sport grounds (tennis, basket-ball, volley-ball, hand-ball, badminton...)

美固坦丙烯酸地垫型球场适合所有新、旧球场的施工。美固坦丙烯酸地垫型球场的特殊性，在于使用美固坦弹性地垫与美固坦丙烯酸树脂的结合。该工艺为选手提供最大的舒适度，并减少了受伤的风险，此系统特别适应多功能用途球场。

Acrylic coat system for old or new courts. The particularity of the Meigutan EA system lies in the application of Meigutan resins over a soft rubber mat stuck onto the surface. This system offer players maximum comfort, decreasing risk of injuries. It is particularly adapted to multipurpose.

基础 Subbase

沥青基础或混凝土基础 Asphalt or Concrete

厚度 Thickness

标准厚度：1mm面层，4mm弹性层，其他厚度可订做

Standard offer: wear layer 1 mm, elastic layer 4 mm; other thicknesses upon request

耐候性 Resistance to weather

卓越的抗紫外线性能，即使在极热或冷的地方皆有优良的性能。

UV-resistant, durable even in extreme heat, cold and moisture.

渗透性 无

Water permeability No



弹性橡胶安全地垫

EPDM Safety Tile

材料 Material

SBR橡胶、EPDM橡胶颗粒。PUR-bonded rubber fibres, coloured EPDM granules, PUR-bonded

产品结构 Structure

双层结构，由SBR橡胶及EPDM橡胶组成，EPDM优越的耐候性能，可保证产品的质量。

底部的排水槽，可有效的排水及减少冲击，并有效的保护使用者的膝部及踝关节。

Dual-layer structure with approx. 11-mm-thick compacted, heavy-duty EPDM wear layer and soft sub-base guaranteed to cushion falls; underside with drainage grooves, dowel holes at edges, dummy joint on top at 500 mm.

安装 Installation

可在混凝土、沥青混凝土，或砾石层上安装。

On Concrete, Asphalt or Compressed bed of gravel/crushed gravel.

公差：长/宽 $\pm 0.5\%$ | 厚度 $\pm 0.5\text{ mm}$

Tolerances : Length / Width $\pm 0.5\%$ | Thickness $\pm 0.5\text{ mm}$

美固坦-弹性橡胶安全地垫

优秀的防滑性能及优越的防坠落保护，促就良好的品质。

价格实惠，经济

使用寿命长、坚固耐用、耐候性佳。

低维护保养，清洁容易。

快速透水，表面不积水。

环境友好型产品。

安装方便且容易。

完善的售前及售后服务。

Advantages of Meigutan falling protection and elastic products

Reliable, uniform falling protection, non-slip properties

Low-priced, economical

Long-life, durable, weather-resistant

Hygienic, low-maintenance, easy to clean

Sound-proofing

Permeable to water, quick to dry

Varied design and application possibilities

Environment-friendly

Quick to install, quick to remove again

Comprehensive pre- and after-sales service



产品尺寸 Dimensions	产品重量 Weight	最大坠落高度 Maximum Fall High	颜色 Colours
1,000 x 500 x 30 mm	approx. 24 kg/m ²		Standard Colors
1,000 x 500 x 40 mm	approx. 29 kg/m ²	1.25 m	Red, Green, Yellow
1,000 x 500 x 50 mm	approx. 35 kg/m ²	1.50 m	Customized Color

高尔夫打击垫 Shock-Resistant Driving Mat

产品描述 Product Details

1. 草的底部有双层纤维网格布。
2. 良好的吸震性能及高尔夫球发球孔。
3. 吸震垫与特殊编织人造草的结合，有效吸收球杆打击时的冲击。
1. Grass with Polyamides material and under the turf is a double-layer polyester scrim.
2. Featuring shock absorbing pad and reinforced tee holes.
3. The cushion pad system combined with a knitted fabric and tough nylon grass blade is designed to absorb club head shock.



材料 Material

SBR橡胶、尼龙66人造草，100%抗紫外线。
PUR-bonded rubber granules, Nylon 66 Grass with 100% UV-resistant.

产品结构 Structure

双层结构，由尼龙66人造草及SBR橡胶组成，缓冲层具有优越的弹性性能，有效的减缓打击时的手部回振。美固坦的专业可保护高尔夫打击者的安全。

Dual-layer structure Nylon 66 Grass with elastic layer compacted, soft sub-base guaranteed to cushion falls; protecting the hand of user.

产品尺寸: 150cm × 150cm × 30mm (59" × 59" × 1 3/16") 和15mm的橡胶缓冲层，亦可根据客户指定缓冲层厚度。
150cm × 150cm × 35mm (59" × 59" × 1 3/8") 和20mm的橡胶缓冲层，亦可根据客户指定缓冲层厚度。

Mat Size: 150cm × 150cm × 30mm (59" × 59" × 1 3/16") with 15mm thick elastic layer Custom size also available.
150cm × 150cm × 35mm (59" × 59" × 1 3/8") with 20mm thick elastic layer Custom size also available.

公差: 长/宽 ± 0.5 % | 厚度 ± 0.5 mm

Tolerances: Length / Width ± 0.5 % | Thickness ± 0.5 mm



休闲草垫

Artificial Turf Safety Mat

应用范围 Applications

办公室, 医疗设施, 教育设施, 零售门店, 机构设施, 大厅入口, 体育场, 礼堂, 音乐厅, 电影院, 洗手间, 游泳池周围, 健身俱乐部, 更衣室, 候车厅, 高尔夫球设施, 人行道, 展览会等。

Offices, Healthcare Facilities, Educational Facilities, Retail, Institutional Facilities, Building Entrances, Stadia, Auditoria, Concert Halls, Cinemas, Washrooms, Pool Surrounds, Fitness Gyms, Changing Rooms, Waiting Rooms, Golf Facilities, Walkways, Exhibitions, etc.



产品结构 Structure

双层结构, 由人造草及SBR橡胶组成, 缓冲层具有优越的弹性性能, 并有效的保护使用者的膝部及踝关节。美国坦的高品质可保护使用者的安全。

Dual-layer structure with approx. 11-mm-thick compacted, heavy-duty EPDM wear layer and soft sub-base guaranteed to cushion falls; underside with drainage grooves.

产品描述 Product Details

1. 采用扣式的组合, 方便且快速的施工, 可替您省下工程管理的成本。
2. 使用专业的减振底垫, 安全又耐用。
3. 室内或是户外均可使用。

1. Adopt dovetailed combination. Base on the large measure of area, they can be assembled by yourself without the professional person so that they can help you to reduce the extra fee such as management and construction.
2. Using professional absorb-shock material is safe and durable.
3. Be suitable for indoor, outdoor.

材料 Material

SBR橡胶、人造草

PUR-bonded rubber granules with Artificial turf

关于产品尺寸: 可根据客户需求, 订制尺寸。

About dimensions: Customized size is available.

公差: 长/宽 $\pm 0.5\%$ | 厚度 $\pm 0.5\text{ mm}$

Tolerances: Length / Width $\pm 0.5\%$ | Thickness $\pm 0.5\text{ mm}$

产品尺寸 Dimensions	产品重量 Weight	最大坠落高度 Maximum Fall High	颜色 Colours
500 x 500 x 23mm	approx. 2 kg/m ²		Standard Colors
600 x 600 x 25mm	approx. 2.9 kg/m ²	1.25 m	Green
1000 x 1000 x 30mm	approx. 8 kg/m ²	1.50 m	Customized Color

